

# INTRODUCTION

Welcome to Midwest Motorcycle Supply's Engine Reference Guide.

In an effort to make servicing your V-Twin® engine easier, the staff at Midwest Motorcycle Supply have put together what we believe to be the most comprehensive list of replacement parts for the heart of your motorcycle. We hope that this reference guide serves as more than just a book, we envision this guide as more of a tool that can be used for years to come. Starting with the Evolution® family of engines this reference guide, through time, will expand to include Shovelhead®, Panhead® & other older Vintage V-Twin® engines.

We would also like to take this time to thank all supporters of Midwest® & Ultima® products. It is because of you that we have grown to be one of the world's leading providers of high quality aftermarket motorcycle parts & accessories. Thank You & Ride Safe!!!

Every attempt has been made to insure proper fitment of our parts for the applications listed in this guide. It is the end users responsibility to exercise good judgement in the part selection, installation & maintenance of their motor when installing parts referred to in this reference guide. Midwest MC Supply has no control over the judgement of others & assumes no responsibility or liability of any nature for the failure of others to use good judgement.

Midwest Motorcycle Supply, Est. in 1971, is one of the world's leading manufacturers and distributors for aftermarket parts and accessories for American made motorcycles. As a manufacturer we have the capability to produce many of the products you are currently purchasing from other distributors . . . at a fraction of the cost! See examples of our product line at ***www.ultimaproducts.com*** We are committed to keeping up to date on industry research and technical data, as well as legislation and sales demographics & statistics for the benefit of our Dealers.

Ultima Company LLC is not a representative of any other motorcycle engine manufacturer and the parts we sell are not necessarily recommended by any other motorcycle engine manufacturer.

All words used in this catalog denoting any motorcycle engine manufacturer, engine models or part numbers are intended for use as reference only.

Although our replacement engines and engine parts are not original factory equipment for some manufacturers, our intention is to provide an exceptional quality replacement part that will outperform the original equipment of many OEM manufacturers.

Harley-Davidson® Parts: Harley® and Harley-Davidson® and other model names of Harley® motorcycles are used as a reference only. Some H-D® part numbers are also used as reference only. We are not an authorized Harley® dealer and in no way do we have, or intend to imply any kind of business relationship with Harley-Davidson Motor Company®. Our intention is to provide products that can be used on a Harley-Davidson® motorcycle.

Names and words that are registered trademarks of Harley-Davidson® Inc. Milwaukee, WI, such as Evolution®, Harley-Davidson®, Harley®, H-D®, HD®, and Softail® are not intended to imply that they are Harley-Davidson® original equipment by their use in connection with Harley-Davidson® factory part numbers.

All other trademarks, registered trademarks and brand names used in this catalog are the property of their respective holders.

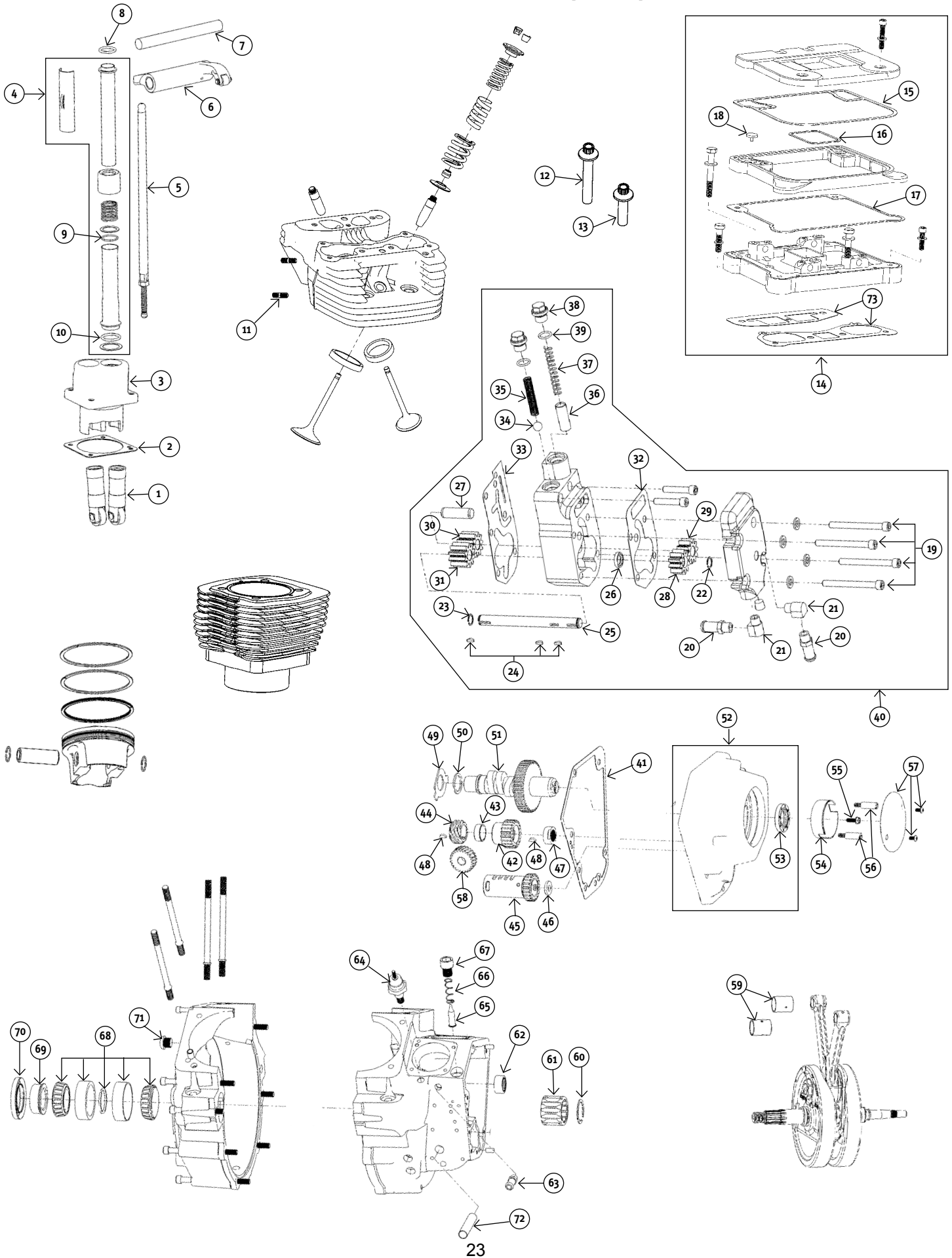
Ultima is not a representative of any other motor or motorcycle manufacturer. All words used in this “Midwest Reference Guide” are intended for use as reference only.

Although our motor replacement parts are not original equipment for some motor manufacturers, our intention is to provide an exceptional quality replacement part that meets, exceeds & outperforms the original equipment of many manufacturers. Names & words used in this “Midwest Reference Guide” that are registered trademarks of S&S® Cycle, Merch Performance® & Rev Tech® are not intended to imply that they are S&S® Cycle, Merch Performance® or Rev Tech® original equipment.

#### WARNING

Serious injury, death and property damage can result from the improper use, control, alteration, or maintenance of motorcycles. The dealer and dealers customers must exercise good judgement in the use, control, alteration, part selection and installation, and maintenance of motorcycles. Ultima® has no control over the judgement of others and assumes no responsibility or liability of any nature for the failure of others to use good judgement.

# REVTECH® 88, 100, 100 (4X4), 110 C.I.



# REVTECH® 88, 100, 100 (4X4), 110 C.I.

#	PART#	DESCRIPTION	OEM#	QTY	DISPLACEMENT FITMENT
1	91-880	Ultima lifter	18523-86	EA	88,100,100(4X4),110
2	78-670	Rear Tappet block gasket		EA	88,100,100(4X4),110
	78-671	Front Tappet block gasket		EA	88,100,100(4X4),110
3	91-697	Tappet blocks, 4.0" bore motors, w/hardware, chrome		SET	100,100(4X4),110
	91-613	Tappet blocks, w/hardware, chrome		SET	88
4	91-775	Pushrod cover assembly		EA	88,100,100(4X4),110
5	91-795	Pushrod set adjustable stk length up to +.500"		SET	88,100,100(4X4),110
6	91-699	Rocker arm set 1.7 ratio		SET	88,100,100(4X4),110
7	91-666	Rocker arm shaft	17611-83	EA	88,100,100(4X4),110
8	78-675	Pushrod O-ring upper	11157	EA	88,100,100(4X4),110
9	78-673	Pushrod O-ring middle	11132	EA	88,100,100(4X4),110
10	78-674	Pushrod O-ring bottom	11145	EA	88,100,100(4X4),110
11	66-242	Exhaust stud	16715-83	EA	88,100,100(4X4),110
12	40-616	Head bolt, long	16478-85	EA	88,100,100(4X4),110
13	40-617	Head bolt, short	16480-92	EA	88,100,100(4X4),110
14	89-516	93-99 Rkr box assy.Ultima 2 piece solid top, Includes hdwre/gskts, chrome		SET	88,100
	89-496	93-99 Rkr box assy.2 piece w/hole in center, Includes hdwre/gskts, chrome		SET	88,100
15	78-365	Upper gasket rubber	17356-92	PKG 5	88,100
16	78-366	Center gasket rubber	17358-84A	PKG 5	88,100
17	78-363	Lower gasket rubber		PKG 5	88,100
18	78-205	Umbrella valve/seal	26856-89	EA	88,100
19	41-787	Oil pump bolt kit, Allen head 92-99		KIT	88,100,100(4X4),110
20	21-123	Spigot tube 84-99	63533-41	EA	88,100,100(4X4),110
21	21-185	Spigot elbow 84-99		EA	88,100,100(4X4),110
22	98-325	Retaining ring 84-99	26348-36	EA	88,100,100(4X4),110
23	98-329	Retaining ring 84-99	11002	EA	88,100,100(4X4),110
24	98-272	Woodruff key	26348-15	EA	88,100,100(4X4),110
25	98-334	Drive shaft 84-99	26346-70	EA	88,100,100(4X4),110
26	95-221	Oil seal 84-99	26227-58	EA	88,100,100(4X4),110
27	98-618	Idler pin 84-99	26327-68	EA	88,100,100(4X4),110
28	98-615	Feed, drive gear 14T 84-99	26328-74	EA	88,100
29	98-616	Feed, idler gear 14T 84-99	26326-62A	EA	88,100
30	98-614	Return, idler gear 14T 84-99	26317-68A	EA	88,100
31	98-613	Return, drive gear 14T 84-99	26315-68A	EA	88,100
32	78-398	Gasket, oil pump cover 92-99 paper Cometic	26276-92	PKG 10	88,100
33	78-396	Gasket, oil pump base 92-99 paper Cometic	26273-92	PKG 10	88,100
34	98-617	Check ball	8873	EA	88,100
35	98-620	Check ball spring	26262-80	EA	88,100
36	98-623	Plunger	26400-82	EA	88,100
37	98-619	Plunger spring	26207-83	EA	88,100
38	41-888	Spring cap	26263-80	KIT	88,100
39	95-828	O-ring 84-99	11105	PKG 5	88,100,100(4X4),110
40	98-515	Oil pump, Ultima 92-99 std. vol. polished w/hdwre & gskts		EA	88,100
	98-517	Oil pump, Ultima 92-99 High output polished w/hdwre & gskts		EA	88,100,100(4X4),110
	98-520	Oil pump, Ultima 92-99 High output wrinkle blk w/hdwre & gskts		EA	88,100,100(4X4),110
41	78-379	Gasket, cam cover 93-99	25225-93	EA	88,100,100(4X4),110
42	98-585	Gear, pinion Orange	24040-78	EA	88,100,100(4X4),110
	98-586	Gear, pinion White	24041-78	EA	88,100,100(4X4),110
	98-587	Gear, pinion Yellow	24042-78	EA	88,100,100(4X4),110
	98-588	Gear, pinion Red	24043-78	EA	88,100,100(4X4),110
	98-589	Gear, pinion Blue	24044-78	EA	88,100,100(4X4),110
	98-590	Gear, pinion Green	24045-78	EA	88,100,100(4X4),110
	98-591	Gear, pinion Black	24046-78	EA	88,100,100(4X4),110
43	98-89	Pinion gear spacer	24703-54B	EA	88,100,100(4X4),110
44	98-359	Gear, oil pump drive 54-89	26349-73	EA	88,100
45	98-512	Gear, breather std.	25313-77A	EA	88,100
	98-494	Gear, breather +.030"	25313-77A	EA	88,100
46	98-80	Shim, breather gear .110" 79-99	25313-77A	EA	88,100
	98-81	Shim, breather gear .115" 79-99	25321-79	EA	88,100
	98-82	Shim, breather gear .120" 79-99	25322-79	EA	88,100
	98-83	Shim, breather gear .115" 79-99	25323-79	EA	88,100
47	98-302	Nut, pinion gear 54-89	24023-54	EA	88,100,100(4X4),110
48	98-305	Woodruff key 54-89	23985-54	EA	88,100,100(4X4),110
49	98-372	Washer, cam thrust	25550-57	EA	88,100,100(4X4),110
50	98-375	Cam shim .055" 84-99	25551-36	EA	88,100,100(4X4),110
	98-376	Cam shim .060" 84-99	25552-36	EA	88,100,100(4X4),110
	98-377	Cam shim .065" 84-99	25553-36	EA	88,100,100(4X4),110
	98-378	Cam shim .070" 84-99	25554-36	EA	88,100,100(4X4),110
	98-379	Cam shim .075" 84-99	25555-36	EA	88,100,100(4X4),110
	98-380	Cam shim .080" 84-99	25556-36	EA	88,100,100(4X4),110
51	114-52	Camshaft Andrews EV27 84-99		EA	88
	114-246	Ultima cam .625" lift (may require high lift springs)		EA	100,100(4X4),110
52	88-70	Cam cover 93-99 w/hdwre & gasket chrome	25266-93A	EA	88,100,100(4X4),110
53	95-222	Oil seal	83162-51	EA	88,100,100(4X4),110
54	53-528	Ignition rotor (gold)	32402-83	EA	88,100,100(4X4),110
55	53-529	Ignition rotor screw	2611C	EA	88,100,100(4X4),110
56	91-352	Ignition timing screws	32606-82	EA	88,100,100(4X4),110
57	89-304	Point cover domed, chrome 70-99	32524-83	EA	88,100,100(4X4),110
	89-114	Point cover Ultima domed, chrome 70-99 w/hdwre & gasket	32524-83	EA	88,100,100(4X4),110
58	98-358	Gear, oil pump driven 73-95 24T	26345-73	EA	88,100
59	95-115	Wristpin bushing, std. size	24334-36	EA	88,100,100(4X4),110
	95-389	Wristpin bushing, +.002"		EA	88,100,100(4X4),110

# REVTECH® 88, 100, 100 (4X4), 110 C.I.

#	PART#	DESCRIPTION	OEM#	QTY	DISPLACEMENT FITMENT
60	98-531	Pinion bearing retaining ring	11177	EA	88,100,100(4X4),110
61	95-602	Pinion bearing 87-99 White	24626-87	EA	88,100,100(4X4),110
	95-603	Pinion bearing 87-99 Green	24628-87	EA	88,100,100(4X4),110
	95-604	Pinion bearing 87-99 Red	24641-87	EA	88,100,100(4X4),110
	95-605	Pinion bearing 87-99 Blue	24643-87	EA	88,100,100(4X4),110
	95-173	Cam bearing	9058	EA	88,100,100(4X4),110
63	21-123	Spigot tube 84-99	63533-41	EA	88,100,100(4X4),110
64	17-65	Oil pressure switch tall	26561-84	EA	88,100,100(4X4),110
	17-61	Oil pressure switch short	26552-72	EA	88,100,100(4X4),110
65	98-510	Screen, crankcase	24981-70	EA	88,100,100(4X4),110
66	98-511	Spring, crankcase 70-99	24982-70	EA	88,100,100(4X4),110
67	41-888	Plug, tappet screen	26263-80	EA	88,100,100(4X4),110
68	95-320	Bearing & race set	9028	SET	88,100,100(4X4),110
69	98-360	Sprocket shaft spacer 71-99	24002-70	EA	88,100,100(4X4),110
70	95-805	Oil seal	12026	EA	88,100,100(4X4),110
71	98-490	Allen timing plug 70-99 chrome		EA	88,100,100(4X4),110
72	300-453	Bushing, oil pump 36 & ltr	24641-36	EA	88,100,100(4X4),110
73	78-321	2 piece gasket set with silicone bead 84-99		SET	88,100

Every attempt has been made to insure proper fitment of our parts for the applications listed in this guide. It is the end users responsibility to exercise good judgement in the part selection, installation & maintenance of their motor when installing parts referred to in this reference guide. Midwest MC Supply has no control over the judgement of others & assumes no responsibility or liability of any nature for the failure of others to use good judgement.